

share your ideas, questions, etc. [here >>](#)

capital flow worksheet

Look at the diagram on the right.

It describes some examples of **financial capital** flows and the roles of various stakeholders who are common in real estate development.

financial
social

People may provide **social capital** in many ways during project delivery. Examples are by contributing their time and expertise to help understand the community, place and identity or by contributing their relationships and social connections to find tenants or partner organizations.

environmental

Environmental capital includes the raw materials that are necessary to construct a project, like the land, energy and building materials. The environment also is affected by outputs of the project's operations and management - for example through impacts on water and air quality.

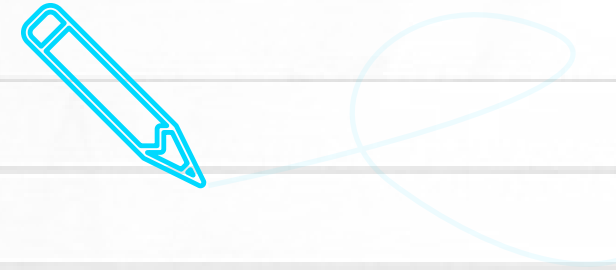
Considering the **environmental, social, and governance (ESG)** forms of capital together is known as the triple bottom line. ESG is a structure for reporting performance on these three measures.

How does value flow between people and place as a result of this project? Consider the flow of environmental, social and financial resources in your project. Are environmental and social impacts being accounted for or are they being treated as externalities?

Add your notes or customize the capital flows for your own project delivery. Add notes about the stakeholders who are capturing value through the project and review the full [Centering Health Equity Report](#).

Are there unrealized opportunities for inclusive value creation and expanding structural health equity through broadened team structures, ownership models or a regenerative rather than extractive approach to environmental resource flows or social capital?

Seek ideas from the full [Centering Health Equity Report](#).



This diagram, a template describing some examples of **financial** capital flows shown as blue arrows and the roles of various stakeholders who are common in real estate development. It's here for you to customize!

